



8500 Balboa Blvd. , Northridge, CA 91329

## HOW TO LOAD SPEAKER TUNING FILES IN JBL SYNTHESIS SDA POWER AMPLIFIERS

NOVEMBER 30, 2017

Page 1 of 5

### Overview

JBL Synthesis SDA Power Amplifiers can be configured for use with Revel Extreme Climate L41XC, L42XC, and L12XC Landscape Series Loudspeakers. The attached speaker tuning library file Revel Landscape-111017.DCi Series.SpeakerTuning can be loaded into the control panel of JBL Synthesis SDA power amplifier using Harman HiQnet™ Audio Architect Software, version 1.6 or later. The software is available for download at:

<http://audioarchitect.harmanpro.com/en-US/software>

### Loading the Speaker Tuning Files:

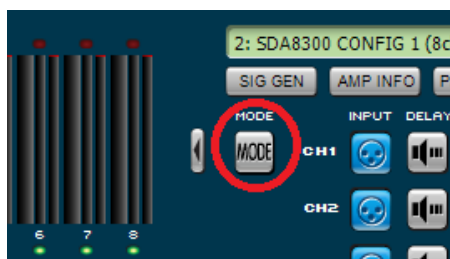
- 1.) Open Audio Architect Software and “Go Online” with the amplifier. Make sure your computer and the SDA amplifier are on the same network. If you have not done this before, please watch the video at the following link up to 1:35 for instructions to connect to the amplifier using Audio Architect:

<https://www.youtube.com/watch?v=haX0dCQ2m1c>

- 2.) In the Room View, double click on the SDA amplifier icon to view the amplifier Control Panel.

**NOTE:** For 70V operation, you will need to configure those individual amplifier channels accordingly in the “Amplifier Mode Settings” window.

To create a 70V amplifier configuration, double click the “Mode” button in the amplifier control panel.





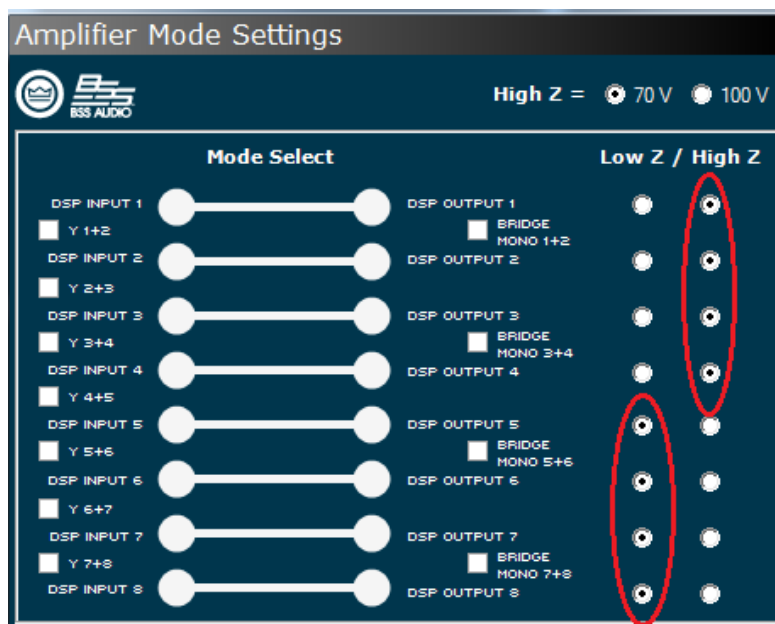
8500 Balboa Blvd. , Northridge, CA 91329

## HOW TO LOAD SPEAKER TUNING FILES IN JBL SYNTHESIS SDA POWER AMPLIFIERS

JUNE 13, 2017

Page 2 of 5

In the Amplifier Mode Settings window, select “High Z” for the amp channels you wish to operate in 70V. As an example, this picture shows a SDA8300 configured for 70V for channels 1-4, and low impedance for channels 5-8.



**Important:** Please refer to the Wiring Instructions section of the Revel Extreme Climate Landscape series Owner's Manual for proper wiring for 70V and Low Impedance operation.

**WARNING:** Always select the 70V option if choosing a lower voltage output. Do not connect Revel XC series speakers to 100V amplifier outputs, as the speakers will likely be damaged.



8500 Balboa Blvd. , Northridge, CA 91329

## HOW TO LOAD SPEAKER TUNING FILES IN JBL SYNTHESIS SDA POWER AMPLIFIERS

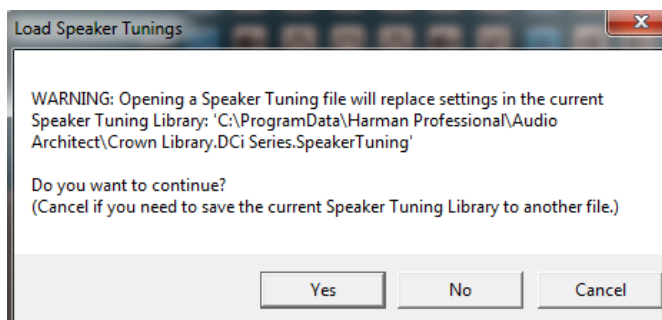
JUNE 13, 2017

Page 3 of 5

- 3.) After selecting the speaker tuning preset, navigate back to the Control Panel. Viewing the amplifier control panel, select File\Open\Speaker Tuning.



- 4.) The program will warn that you are about to replace existing speaker tunings you may currently have in place. If you have other speaker tunings on your computer, you should save these before loading the new tuning library file. Continue to open the Speaker Tuning file for the Revel Extreme Climate Landscape Series Loudspeakers.





8500 Balboa Blvd. , Northridge, CA 91329

## HOW TO LOAD SPEAKER TUNING FILES IN JBL SYNTHESIS SDA POWER AMPLIFIERS

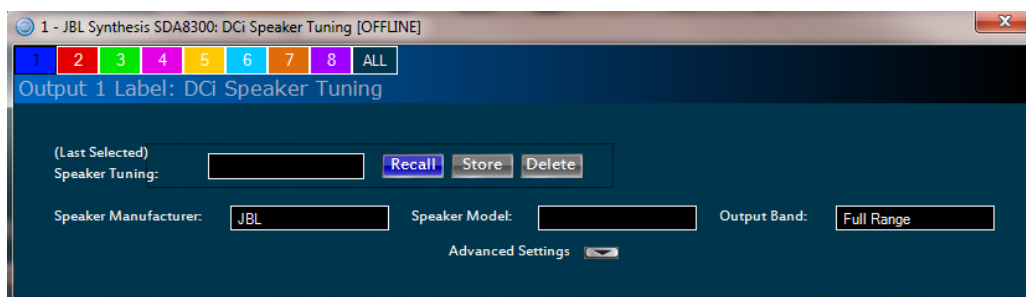
JUNE 13, 2017

Page 4 of 5

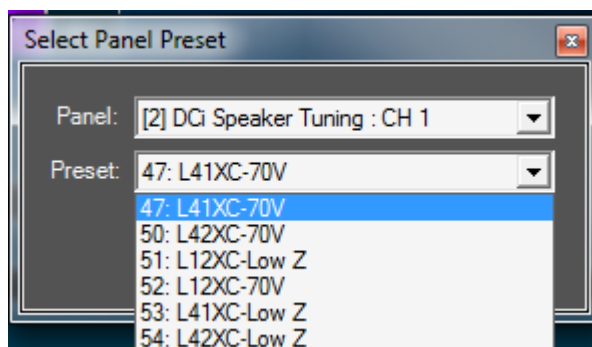
- 5.) You can then navigate to and select the speaker tuning library file that includes Revel Extreme Climate Landscape Series Loudspeakers. Once it is loaded, you can select the exact tuning needed on a per-channel basis. In the block diagram (shown below) double-click on the speaker tuning icon for the channel(s) you want to configure.



- 6.) After clicking the icon, you will see the following speaker tuning panel. On this speaker tuning panel, select "Recall".



- 7.) You will be presented with a list of speaker models. Select the preset for the desired speaker model.





8500 Balboa Blvd. , Northridge, CA 91329

## HOW TO LOAD SPEAKER TUNING FILES IN JBL SYNTHESIS SDA POWER AMPLIFIERS

JUNE 13, 2017

Page 5 of 5

The following presets are provided for Revel Extreme Climate Landscape Series Loudspeakers:

L41XC-70V:	Revel L41XC Satellite Tuning, 70V Operation
L41XC-Low Z:	Revel L41XC Satellite Tuning, Low Impedance Operation
L42XC-70V:	Revel L42XC Bollard Tuning, 70V Operation
L42XC-Low Z :	Revel L42XC Bollard Tuning, Low Impedance Operation
L12XC- 70V:	Revel L12XC Subwoofer Tuning, 70V Operation
L12XC-Low Z:	Revel L12XC Subwoofer Tuning, Low Impedance Operation

8.) Once you have selected the exact tuning needed for each channel, exit and save your file.